



E&V ID W-030DDR
SANTA EULALIA

Elegant luxury villa with sea views

TOTAL SURFACE

approx. 360 m²

NUMBER OF BEDROOMS

4

PLOT SURFACE

approx. 520 m²

ASKING PRICE

€2,985,000



Property Details

Total Surface

approx. 360 m²

Asking price

€2,985,000

Terrace Size

approx. 200 m²

Views

Building View, Green View, Water View

Plot Surface

approx. 520 m²

Total Number of Bathrooms

approx. 4

Number of Rooms

5

Heating

**Heat Pump (Underfloor Heating,
Underfloor Heating)**

Number of Bedrooms

4

Number of stories

3

Total Number of Parking Bays

2

Air-Condition

Central Air-conditioned

Commission Text

Availability upon agreement.

Engel & Völkers does not accept responsibility as the information provided in this brochure is for information only and it is subject to errors, omissions, change of price or withdrawal without notice.

Taxes, notary and registry fees must be paid by purchaser, the commission to E&V paid by the seller as stipulated by Spanish regulations.



Property Description

This exclusive development of just eight luxury villas is located in the northeast of Ibiza, right in the heart of Santa Eulalia del Rio. Just steps from the town hall square and a five-minute walk from the beach and marina, it offers a prime location that blends comfort, privacy, and authentic Mediterranean living.

The villas feature a modern design inspired by traditional Ibizan architecture, using top-quality materials such as local stone, oak wood, and white lime mortar. Large south-facing windows flood the interiors with natural light, capturing the island's vibrant and luminous atmosphere.

This villa comprises four bedrooms all with en-suite bathrooms, plus an additional guest toilet, offers a spacious open-plan living area and a fully equipped designer kitchen, distributed across three levels. The property with sea view, private swimming pool, and beautifully landscaped Mediterranean garden, the perfect environment to enjoy Ibiza's laid-back luxury lifestyle.

Additional highlights include aluminium double-glazed windows, a smart home system, and a covered carport — all designed to provide maximum comfort and functionality throughout the year. A rare opportunity for those seeking a refined home in one of the island's most desirable locations.



Location Description

Santa Eulalia del Rio – Mediterranean charm with its own style is the third-largest town on Ibiza and is located on the island's picturesque east coast. As you approach from Ibiza Town, one of the first landmarks you'll notice is the iconic whitewashed Puig de Missa — a fortified church complex with a historic watchtower that overlooks the town.

Santa Eulalia is known for its serene charm, featuring a beautiful palm-lined promenade that stretches along a long, sandy beach. The town enjoys a well-earned reputation as one of Ibiza's top gastronomic and cultural destinations, offering a vibrant selection of restaurants, boutique shops, and a sleek, modern marina.

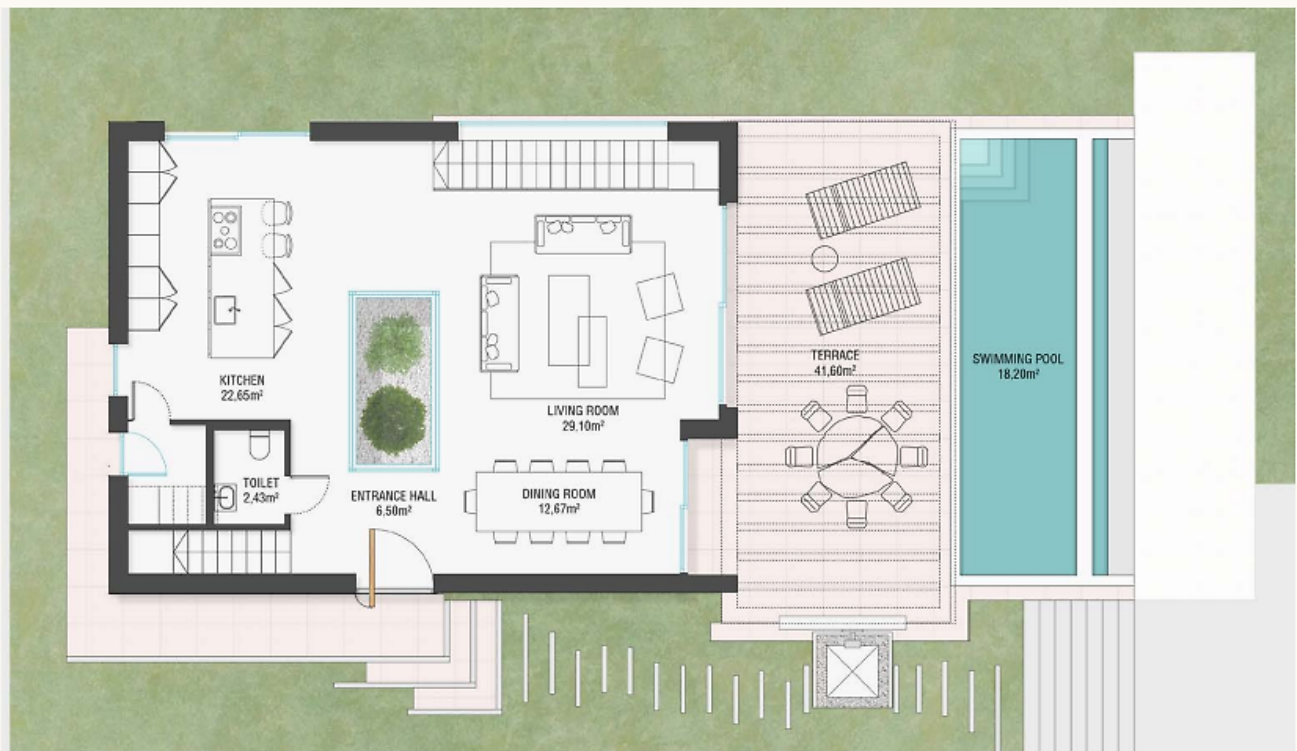








PURE 06
MAIN FLOOR 105.60m²



Floor Plan

PURE 06
UNDERBUILD 141.18m²



Floor Plan

PURE 06
FIRST FLOOR 44.29m²



Floor Plan

ESCALA DE LA CALIFICACIÓN ENERGÉTICA

Consumo de energía:
kWh / m² año

Emisiones:
kg CO₂ / m² año

A más eficiente		
B		
C		
D	EN TRÁMITE	
E		
F		
G menos eficiente		

Important Notice

In compliance with the current Personal Data Protection Law, we inform you that your personal data were included in an automated file owned by Engel & Völkers Ibiza, S.L., with CIF B57138182 and fiscal address at Avda. Santa Eulalia, 17 bajos, 07800 Ibiza, Spain, to attend to the commitments derived from the relationship between the two parties. Engel & Völkers Ibiza, S.L. informs that all data will be handled lawfully, loyally transparently, appropriately, suitably, with restrictions, precisely and kept up to date. You may exercise your right to access, rectify, limit treatment, suppress, withdraw and oppose to your personal data treatment, as well as the consent provided for its treatment by sending your request by email to Ibiza@engelvoelkers.com.

